

YDP-162/YDP-142 Quick Operation Guide

While holding down the [DEMO/SONG] or [PIANO/VOICE] button, press one of the highlighted keys shown below to select a Demo Song or set a parameter.
(Refer to Diagrams 1 and 2 below.)

1



Quick Play												Demo Songs												50 Preset Songs (50 greats for the Piano)												Song Data Loaded from the Computer															
Off												Grand Piano 1												Song No. 1												Song No. 1															
A-1	B-1	C0	D0	E0	F0	G0	A0	B0	C1	D1	E1	F1	G1	A1	B1	C2	D2	E2	F2	G2	A2	B2	C3	D3	E3	F3	G3	A3	B3	C4	D4	E4	F4	G4	A4	B4	C5	D5	E5	F5	G5	A5	B5	C6	D6	E6	F6	G6	A6	B6	C7
On												Grand Piano 2												Song No. 2												Song No. 2															
												Grand Piano 3												Song No. 3												Song No. 3															
												E.Piano 1												Song No. 4												Song No. 4															
												E.Piano 2												Song No. 5												Song No. 5															
												Harpichord												Song No. 6												Song No. 6															
												Pipe Organ												Song No. 7												Song No. 7															
												Vibraphone												Song No. 8												Song No. 8															
												Jazz Organ												Song No. 9												Song No. 9															
												Strings												Song No. 10												Song No. 10															
																								Song No. 11												Song No. 11															
																								Song No. 12												Song No. 12															
																								Song No. 13												Song No. 13															
																								Song No. 14												Song No. 14															
																								Song No. 15												Song No. 15															
																								Song No. 16												Song No. 16															
																								Song No. 17												Song No. 17															
																								Song No. 18												Song No. 18															
																								Song No. 19												Song No. 19															
																								Song No. 20												Song No. 20															
																								Song No. 21												Song No. 21															
																								Song No. 22												Song No. 22															
																								Song No. 23												Song No. 23															
																								Song No. 24												Song No. 24															
																								Song No. 25												Song No. 25															
																								Song No. 26												Song No. 26															
																								Song No. 27												Song No. 27															
																								Song No. 28												Song No. 28															
																								Song No. 29												Song No. 29															
																								Song No. 30												Song No. 30															
																								Song No. 31												Song No. 31															
																								Song No. 32												Song No. 32															
																								Song No. 33												Song No. 33															
																								Song No. 34												Song No. 34															
																								Song No. 35												Song No. 35															
																								Song No. 36												Song No. 36															
																								Song No. 37												Song No. 37															
																								Song No. 38												Song No. 38															
																								Song No. 39												Song No. 39															
																								Song No. 40												Song No. 40															
																								Song No. 41												Song No. 41															
																								Song No. 42												Song No. 42															
																								Song No. 43												Song No. 43															
																								Song No. 44												Song No. 44															
																								Song No. 45												Song No. 45															
																								Song No. 46												Song No. 46															
																								Song No. 47												Song No. 47															
																								Song No. 48												Song No. 48															
																								Song No. 49												Song No. 49															
																								Song No. 50												Song No. 50															
																								1st song												1st song															
																								2nd song												2nd song															
																								3rd song												3rd song															
																								4th song												4th song															
																								5th song												5th song															
																								6th song												6th song															
																								7th song												7th song															
																								8th song												8th song															
																								9th song												9th song															
																								10th song												10th song															

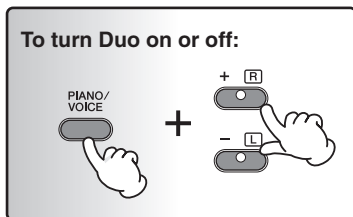
2



I.A.C. Depth												Voices												Reverb Types			Damper Resonance			Reverb Depth						Octave Shift (Dual/Duo mode)			Volume Balance (Dual/Duo mode)			Touch Sensitivity									
-3												Grand Piano 1												Room			Off			0						-1 (Voice 1)			0			Fixed									
A-1	B-1	C0	D0	E0	F0	G0	A0	B0	C1	D1	E1	F1	G1	A1	B1	C2	D2	E2	F2	G2	A2	B2	C3	D3	E3	F3	G3	A3	B3	C4	D4	E4	F4	G4	A4	B4	C5	D5	E5	F5	G5	A5	B5	C6	D6	E6	F6	G6	A6	B6	C7
-1												Grand Piano 2												Hall 1			On			2						+1 (Voice 1)			+2			Medium									
0												Grand Piano 3												Hall 2						4						0 (Voice 2)			+4			Hard									
+2												E.Piano 1												Stage						5						-1 (Voice 2)			+6												
+3												E.Piano 2												Off						7						+1 (Voice 2)															
On												Harpichord												Off						8						-6															
												Pipe Organ												Off						9						-4															
												Vibraphone												Off						10						-3															
												Jazz Organ												Off						11						-2															
												Strings												Off						12						+1 (Voice 2)															
																								Off						13						-5															
																								Off						14						-4															
																								Off						15						-1															
																								Off						16						0															
																								Off						17						+1															
																								Off						18						+2															
																								Off						19						+4															
																								Off						20						+5															
																								Off						Most suitable for the selected voice																					
																								Off																											

3

While holding down the [PIANO/VOICE] button, simultaneously press the [+ R] and [- L] buttons to turn Duo on or off.



YDP-162/YDP-142 Quick Operation Guide

4 While holding down the [METRONOME] button, press one of the highlighted keys shown below to set a parameter.

METRONOME +

Metronome Volume	Metronome Beat	Tempo (Metronome, Songs, etc.)
1, 2, 3, 4, 5, 6, 7, 8, 9, 10, 11, 12, 13, 14, 15, 16, 17, 18, 19, 20	0, 2, 3, 4, 5, 6	Number key 0, Number key 1, Number key 2, Number key 3, Number key 4, Number key 5, Number key 6, Number key 7, Number key 8, Number key 9, 10steps decrease, Default tempo, 10steps increase, 1step increase

Key labels: A-1 B-1 C0 D0 E0 F0 G0 A0 B0 C1 D1 E1 F1 G1 A1 B1 C2 D2 E2 F2 G2 A2 B2 C3 D3 E3 F3 G3 A3 B3 C4 D4 E4 F4 G4 A4 B4 C5 D5 E5 F5 G5 A5 B5 C6 D6 E6 F6 G6 A6 B6 C7

5 While holding down the [DEMO/SONG] and [PIANO/VOICE] buttons, press one of the highlighted keys shown below to set a parameter.

DEMO/SONG
PIANO/VOICE +

Tuning	MIDI Transmit Channel	Transpose	MIDI Receive Channel	Local Control	Program Change	Control Change	Song Playback Channel
442.0 Hz	Ch 1, Ch 2, Ch 3, Ch 4, Ch 5, Ch 6, Ch 7, Ch 8, Ch 9, Ch 10, Ch 11, Ch 12, Ch 13, Ch 14, Ch 15, Ch 16, off	-6, -5, -4, -3, -2, -1, 0 (Normal pitch), +1, +2, +3, +4, +5, +6	Ch 1, Ch 2, Ch 3, Ch 4, Ch 5, Ch 6, Ch 7, Ch 8, Ch 9, Ch 10, Ch 11, Ch 12, Ch 13, Ch 14, Ch 15, Ch 16, Ch 1+2, All	Enable, Disable	On / Off, On / Off		All, Ch 1+2

Key labels: A-1 B-1 C0 D0 E0 F0 G0 A0 B0 C1 D1 E1 F1 G1 A1 B1 C2 D2 E2 F2 G2 A2 B2 C3 D3 E3 F3 G3 A3 B3 C4 D4 E4 F4 G4 A4 B4 C5 D5 E5 F5 G5 A5 B5 C6 D6 E6 F6 G6 A6 B6 C7

6 While holding down the [DEMO/SONG] and [PIANO/VOICE] buttons, press the [+ R], [- L] or both buttons as shown below to fine tune the pitch of your instrument.

To tune up (in about 0.2 Hz steps):

To tune down (in about 0.2 Hz steps):

Default pitch: 440.0Hz